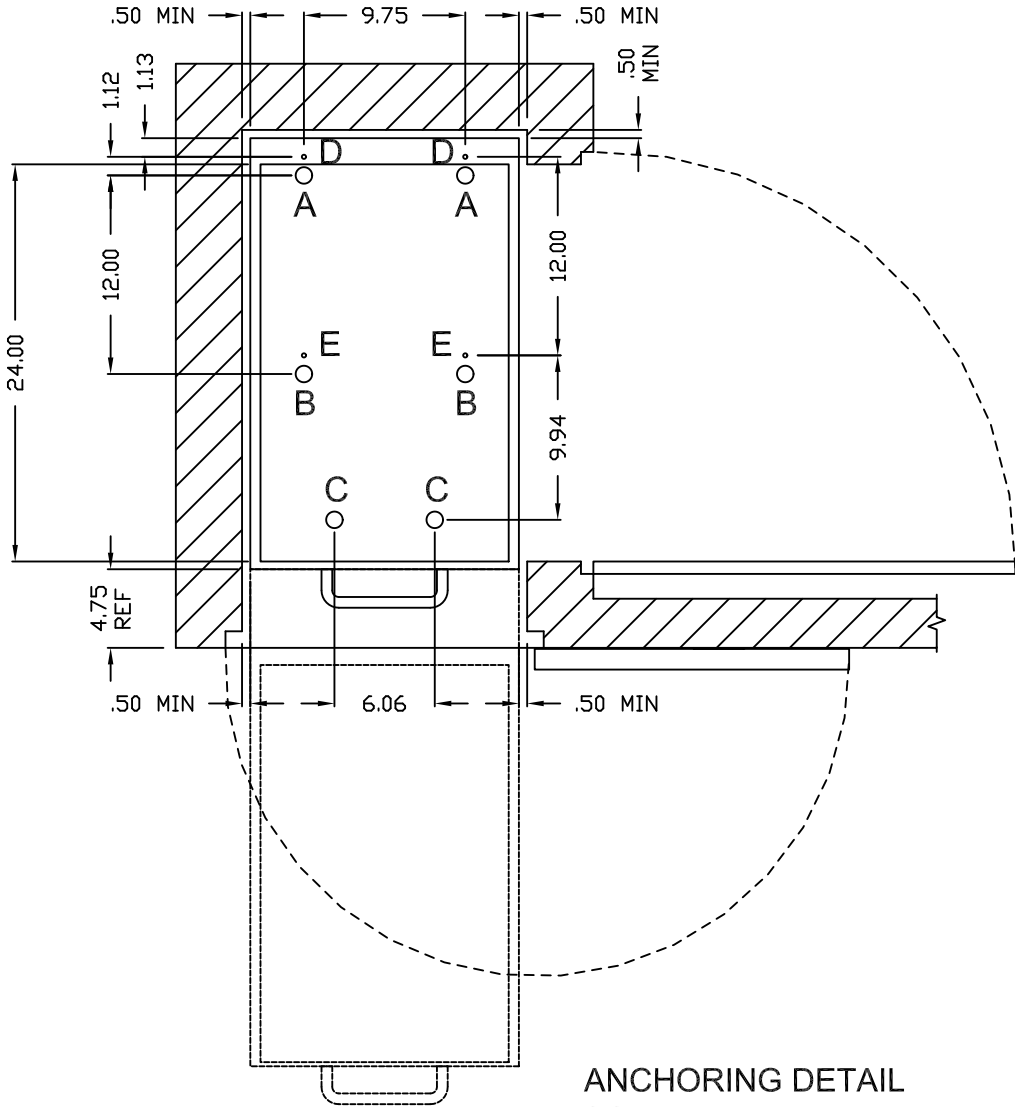


DWG NO.			SH	REV	1		
REVISIONS							
ECO NO.	ZONE	REV	DESCRIPTION			DATE	APPROVED

FORCES AT BOLT POINTS & FOOT POINTS

SYSTEM CONFIG	CARRIAGE WIDTH	CARRIAGE LENGTH	'WORST CASE' FORCE REQUIREMENTS				
			LEVELER 'A' SUPPORT	LEVELER 'B' SUPPORT	LEVELER 'C' SUPPORT	ANCHOR 'D' (PULL OUT)	ANCHOR 'E' (PULL OUT)
SINGLE ENTRY LEFT/RIGHT	15"	24"	400#	74#	900#	350#	650#
	15"	30"	400	74	900	350	650
	15"	33.7"	400	74	900	350	650
	15"	36"	400	74	900	350	650

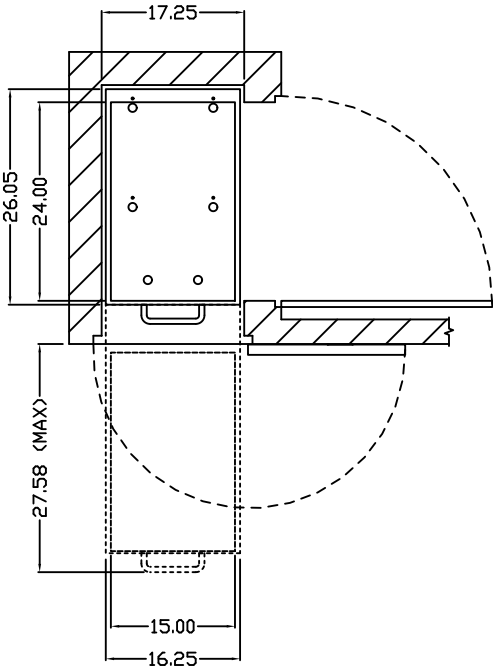
*FORCES CALCULATED PER BOLT
(SHELF WEIGHT = 15lb/ft LENGTH-WIDTH, UNIFORMLY DISTRIBUTED)
ANCHORS TO BE Ø 5/16"-18 GRADE 5 THREADED BOLTS
DO NOT USE WOOD AS A MOUNTING SUBSTRATE TO AVOID LONG TERM INDENTING



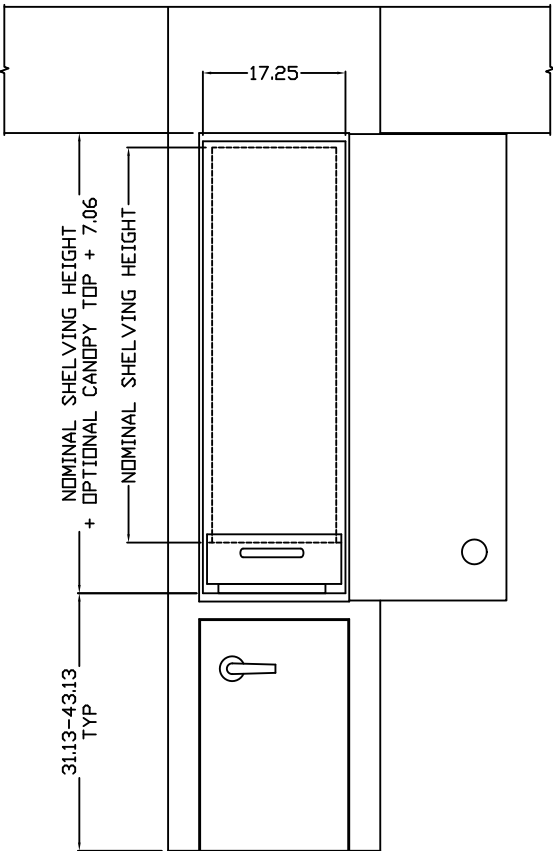
ANCHORING DETAIL
SCALE 2:1

ENCLOSURE CONSTRUCTION GUIDELINES

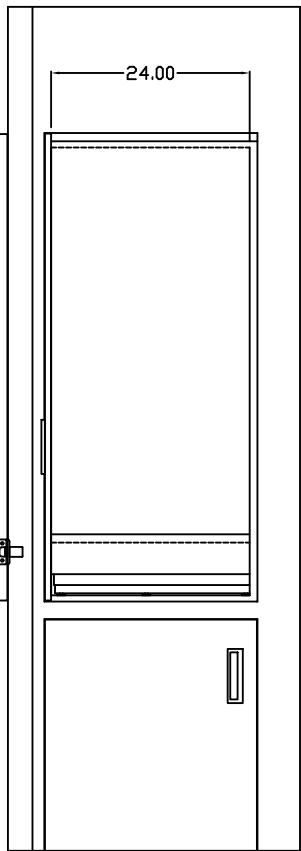
- NOTES:
- 1.) CABINET/CLOSET AND MOUNTING SURFACE BY OTHERS.
 - 2.) LOCAL FIRE CODES MAY APPLY. THE RESPONSIBILITY TO ENSURE APPLICABLE CODES HAVE BEEN MET IS THAT OF OTHERS.
 - 3.) DOORS, WALLS, AND WALL THICKNESSES SHOWN ARE FOR ILLUSTRATIVE PURPOSES ONLY. ACTUAL DIMENSIONS TO BE FINALIZED BY OTHERS.
 - 4.) DIMENSIONS SHOWN ARE TO PROVIDE FINISHED OPENING SIZES ONLY AND INCLUDE RECOMMENDED MINIMUM CLEARANCES. (DIMENSIONS SUBJECT TO CHANGE WITHOUT NOTICE.)



FINISHED OPENING



SINGLE SIDED
SINGLE 15 X 24 CARRIAGE



TOLERANCES UNLESS OTHERWISE SPECIFIED
.XX±.01
.XXX±.005
X°±1°



DWN BY

SRI

DATE

1/26/09

APVD

DATE

Spacesaver
FORT ATKINSON WISCONSIN

TITLE

CoreSTOR™ PATIENT SERVER
SINGLE 15 X 24 GUIDE

SIZE

D

FSCM NO.

58928

DWG NO.

CoreSTOR S 15x24

REV

A

SCALE

NTS

SHEET

OF

COPYRIGHT © 1999 SPACESAVER CORPORATION. ALL RIGHTS RESERVED.
This material is proprietary and confidential, and the disclosure, reproduction by photocopy, film, blueprint or otherwise, or incorporation into any information retrieval system without first receiving written approval from Spacesaver Corporation is expressly prohibited by law.